

# Great American & National Interstate Trucking Offering Contact Sheet

## NATL Contacts

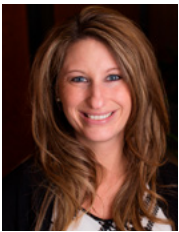
**Katie Clough**

*Senior Operations Manager*

330-659-8900 X1183 (Office)

513-309-2342 (Cell)

katie.clough@natl.com

**Tracy Hicks**

*Senior Marketing Manager*

330-659-8900 X1383 (Office)

330-338-1162 (Cell)

tracy.hicks@natl.com

**Nicole Rickett**

*Business Development Manager*

330-659-8900 X5867 (Office)

216-906-0771 (Cell)

nicole.rickett@natl.com

## Executive Contact

**Randal Smith**

*SVP, Trucking*

513-744-2045 (Office)

904-477-2032 (Cell)

rsmith@gaig.com

**George Skuggen**

*SVP, National Interstate*

330-659-8900 X1142 (Office)

330-523-9537 (Cell)

george.skuggen@natl.com

## GAIG Contacts

**Maria Redrow**

*VP Ops. & Eastern UW*

mkredrow@gaig.com

513-333-6929 (Office)

513-265-6639 (Cell)

**Amy Rands**

*AVP Western UW*

513-579-6897 (Office)

208-484-1523 (Cell)

arands@gaig.com

**Thomas Skuggen**

*Business Development  
Supervisor*

513-333-6593 (Office)

440-541-6552 (Cell)

tskuggen@gaig.com

